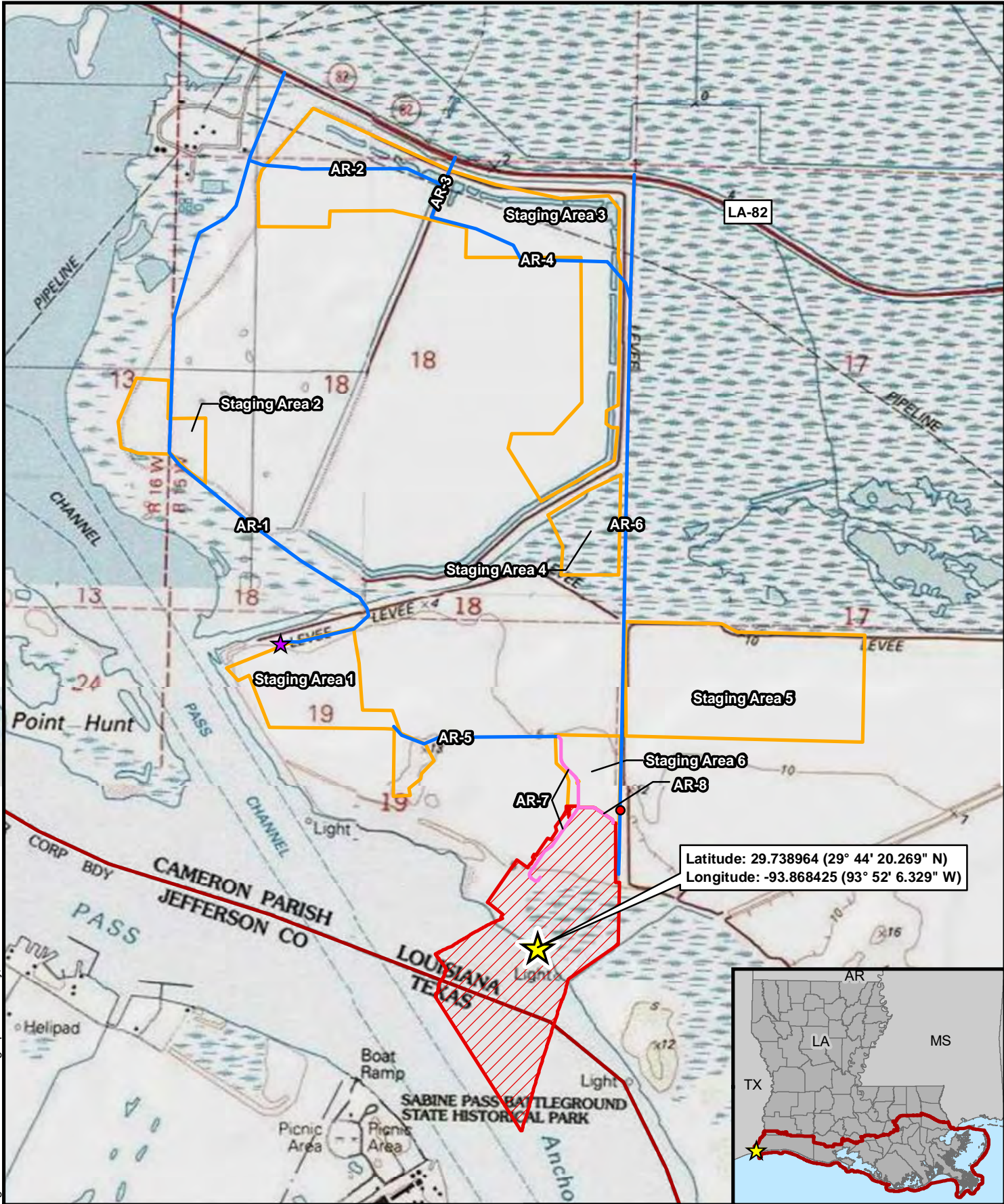


Path: Z:\Clients\ENS\Cheniere\Em104105_SLNG3RDBERTH\Studies\Geospatial\DataFiles\ArcDocs\JPA\SLNG3RDBERTH_JPA_Topo.mxd kboatright 10/19/2018
 COPYRIGHT © 2018 BURNS & McDONNELL ENGINEERING COMPANY, INC. Datum/Coordinate System: NAD 1983 StatePlane Louisiana South FIPS 1702 Feet
 Service Layer Credits: Copyright © 2013 National Geographic Society. i-cubed



Latitude: 29.738964 (29° 44' 20.269" N)
 Longitude: -93.868425 (93° 52' 6.329" W)

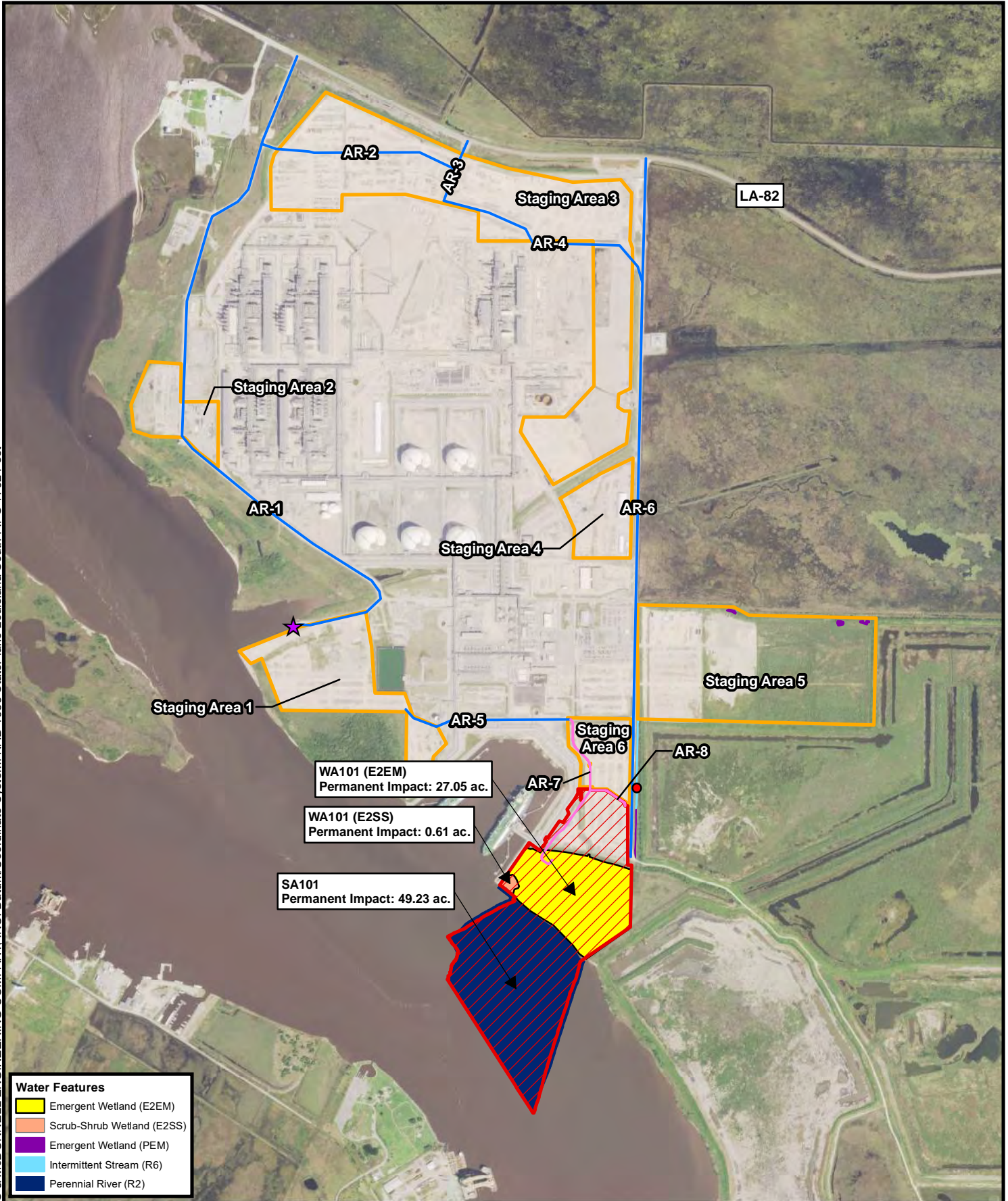


	Third Berth Impact Area		Outfall 001
	Staging Area		Third Berth Center
	Existing Construction Dock		NORTH
	Existing Access Road	 Scale in Feet	
	Proposed Permanent Access Road		
	State Coastal Zone Boundary		

**BURNS
MCDONNELL**
CHENIERE

Figure 1
 Project Vicinity Map
 Sabine Pass LNG, L.P.
 Third Berth Expansion Project
 Cameron Parish, Louisiana

Path: Z:\Clients\ENS\Cheniere\Enr\104105_SLN\G3RDBERTH\Studies\Geospatial\DataFiles\ArcDocs\JPAS\LN\G3RDBERTH_JPA_Aerial.mxd ewemmerich 11/29/2018
 COPYRIGHT © 2018 BURNS & McDONNELL ENGINEERING COMPANY, INC. Datum/Coordinate System: NAD_1983_StatePlane_Louisiana_South_FIPS_1702_Feet



Water Features	
	Emergent Wetland (E2EM)
	Scrub-Shrub Wetland (E2SS)
	Emergent Wetland (PEM)
	Intermittent Stream (R6)
	Perennial River (R2)

- Third Berth Impact Area
- Staging Area
- Existing Construction Dock
- Existing Access Road
- Proposed Permanent Access Road
- Outfall 001

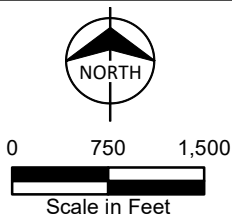
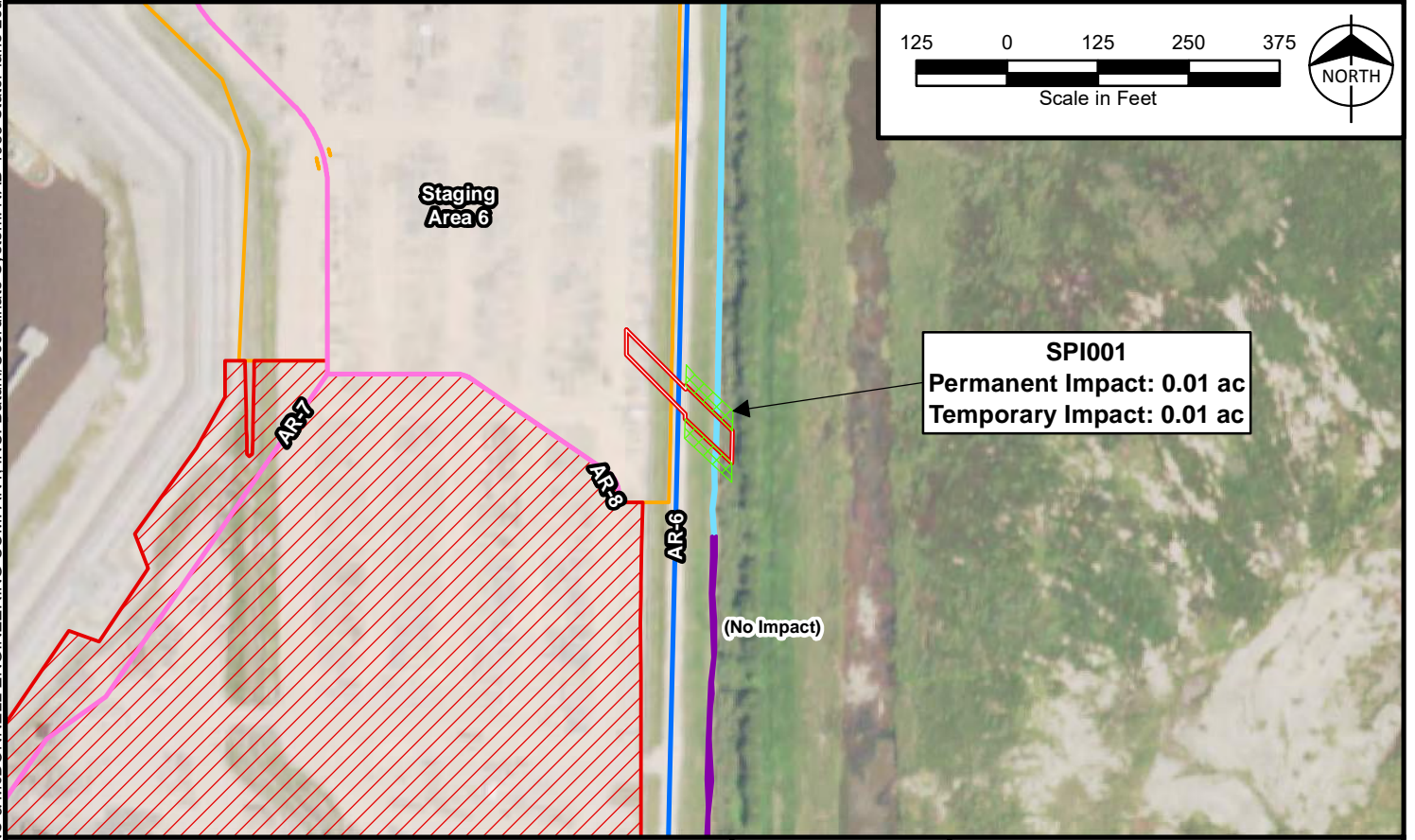
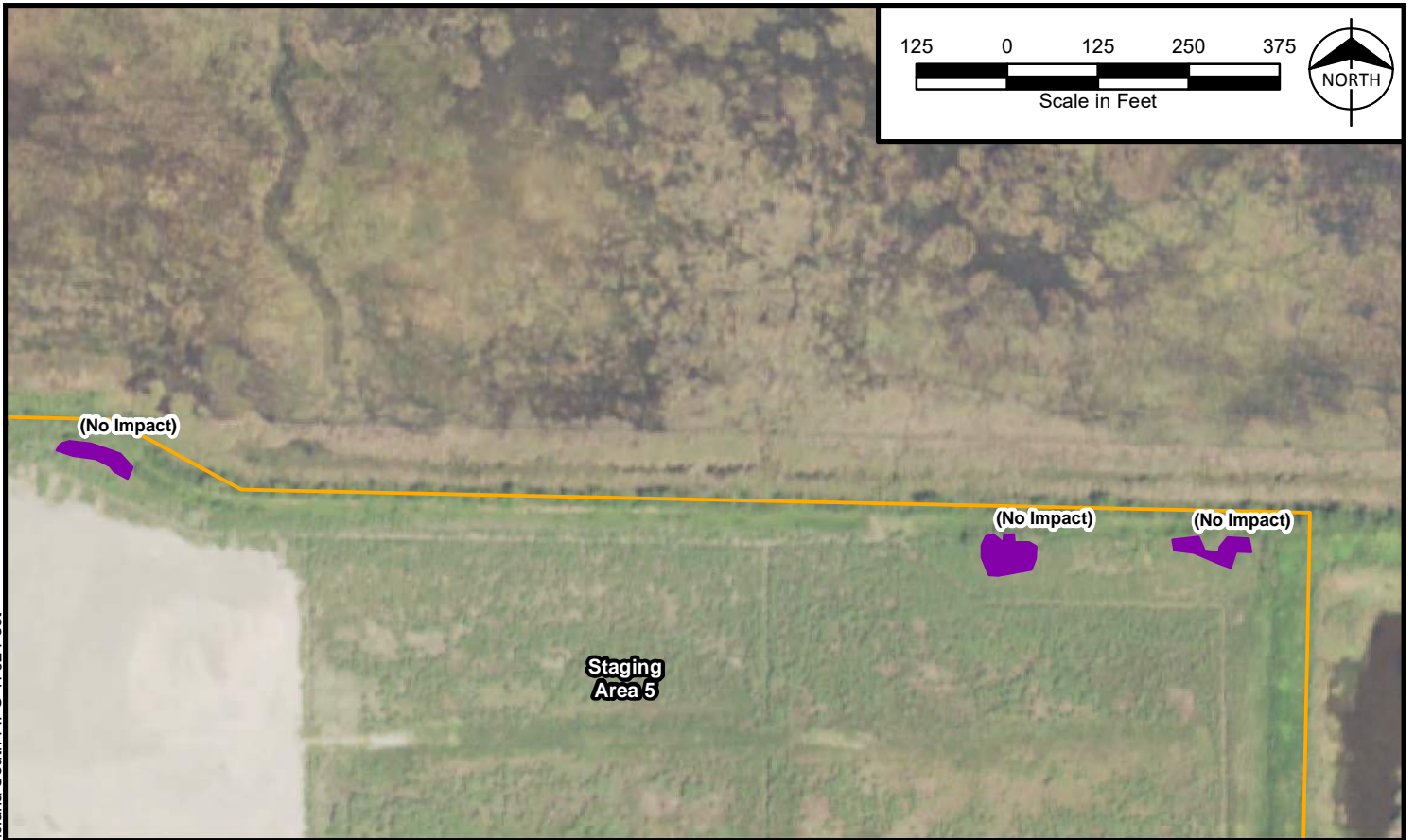


Figure 2a
 Project Impact Map
 Sabine Pass LNG, L.P.
 Third Berth Expansion Project
 Cameron Parish, Louisiana

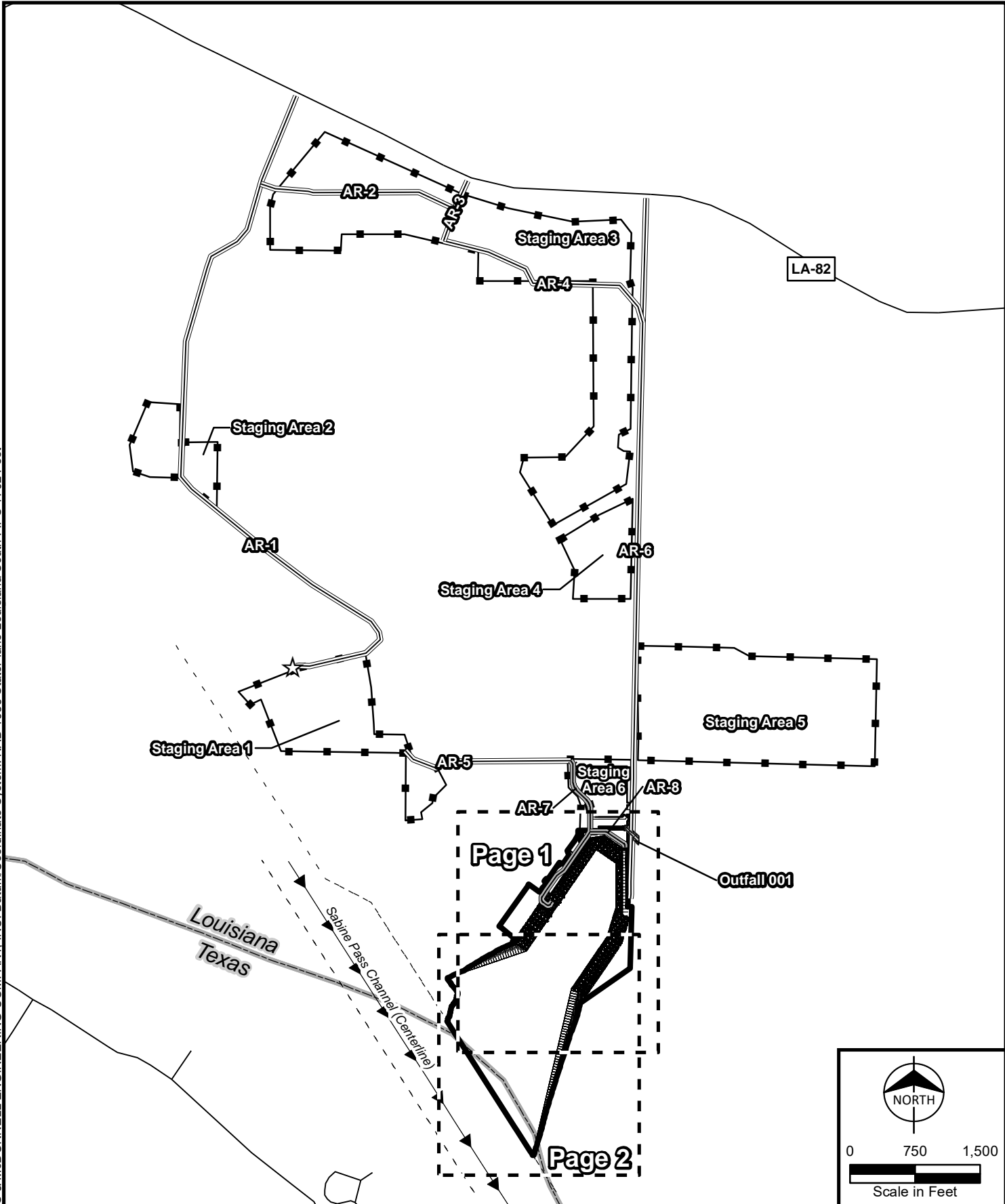


Third Berth Impact Area	Existing Access Road
Staging Area	Proposed Permanent Access Road
Outfall 001 Permanent Workspace	Water Features
Outfall 001 Temporary Workspace	Emergent Wetland (PEM)
Outfall 001	Intermittent Stream (R4)

Figure 2b
 Project Impact Map
 Sabine Pass LNG, L.P.
 Third Berth Expansion Project
 Cameron Parish, Louisiana

Path: Z:\Clients\ENS\Chenierra\104105_SLING3RDBERTH\Studies\Geospatial\DataFiles\ArcDocs\JPA\SLING3RDBERTH_JPA_Zoom.mxd kdboaright 10/19/2018
 COPYRIGHT © 2018 BURNS & MCDONNELL ENGINEERING COMPANY, INC. Datum: Coordinate System: NAD 1983 StatePlane Louisiana South FIPS 1702 Feet

Path: Z:\Clients\ENS\Cheniere\Enr\104105_SLN\G3\ROBERTH\Studies\Geospatial\DataFiles\ArcDocs\USACE\USACE_Fig1_Overview.mxd lacrain 12/21/2018
 COPYRIGHT © 2018 BURNS & McDONNELL ENGINEERING COMPANY, INC. Datum/Coordinate System: NAD_1983_StatePlane_Louisiana_South_FIPS_1702_Feet



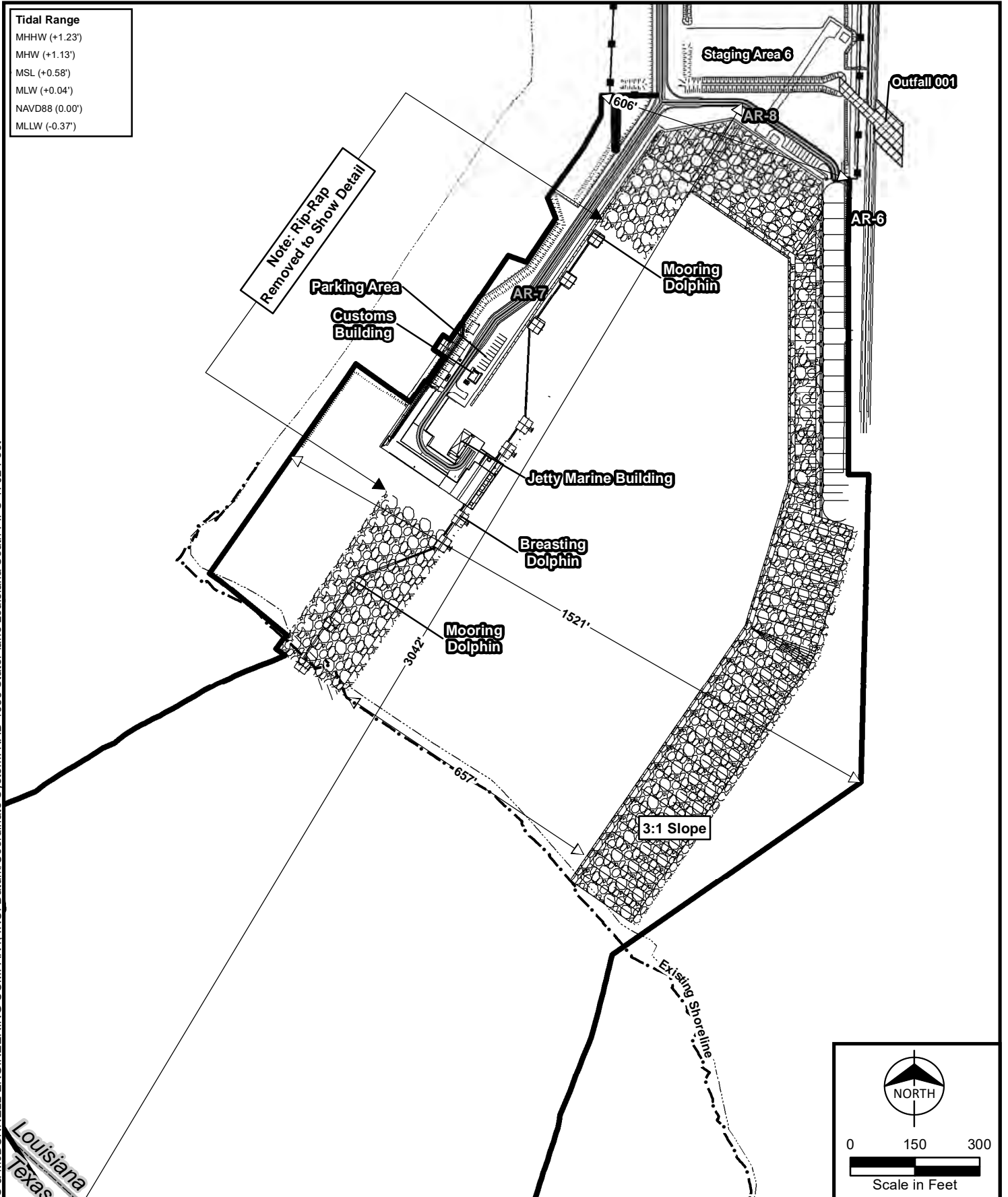
- | | |
|--------------------------------|----------------------------|
| Third Berth Impact Area | Page Index |
| Staging Area | Sabine Pass Channel |
| Existing Access Road | Proposed Design |
| Proposed Permanent Access Road | Existing Construction Dock |
| Outfall 001 Workspace | |
| Sabine Pass Channel Centerline | |



Figure 1-1
 Overview Index Map
 Sabine Pass LNG, L.P.
 Third Berth Expansion Project
 Cameron Parish, Louisiana

Tidal Range

- MHHW (+1.23')
- MHW (+1.13')
- MSL (+0.58')
- MLW (+0.04')
- NAVD88 (0.00')
- MLLW (-0.37')

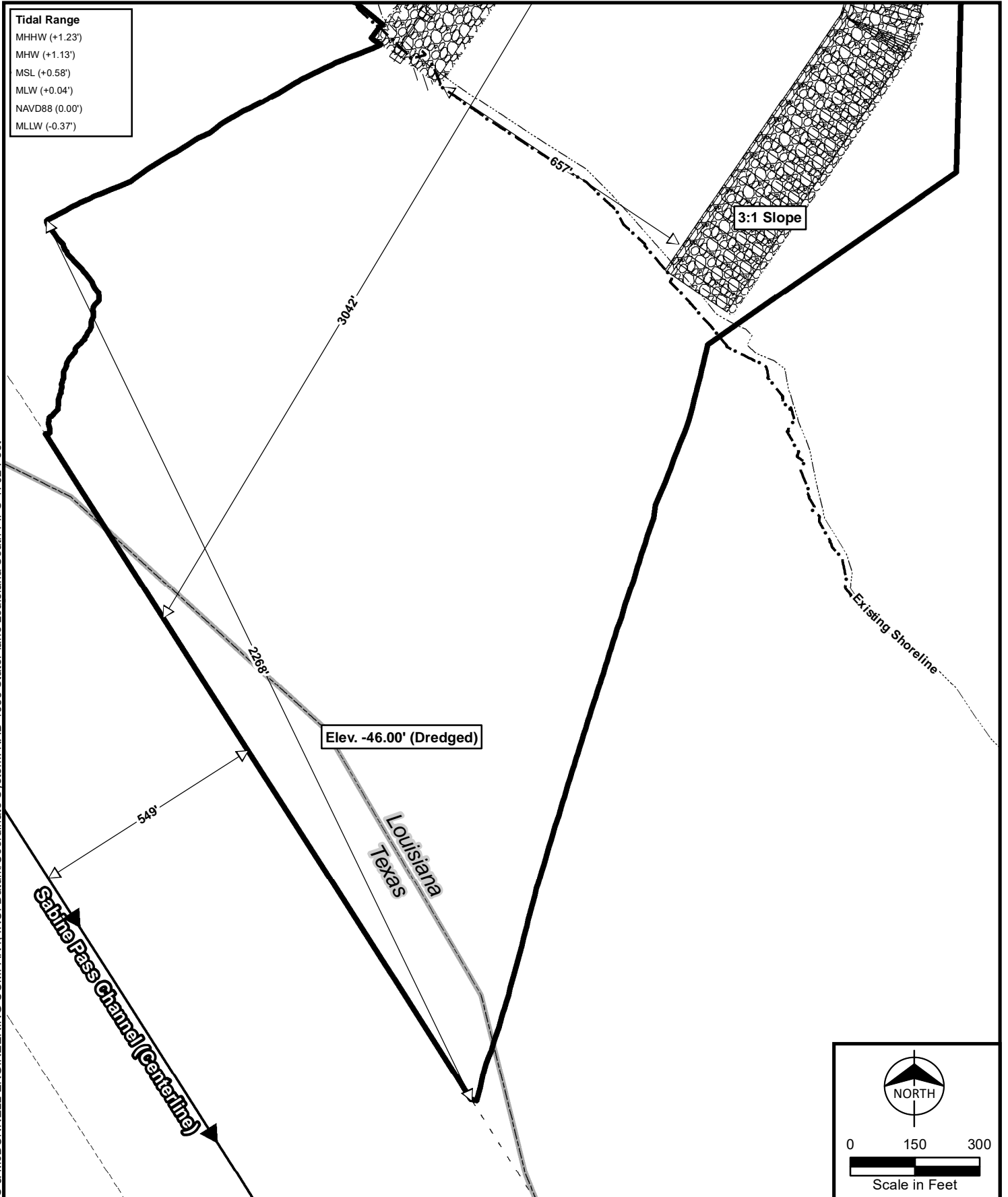


	Outfall 001 Workspace		Proposed Design
	Riprap		Existing Access Road
	State Boundary		Proposed Permanent Access Road
	Third Berth Impact Area		MLLW (-0.37')
	Staging Area		State Boundary
	Existing Shoreline		



Figure 1-2
Overview Map
 Sabine Pass LNG, L.P.
 Third Berth Expansion Project
 Cameron Parish, Louisiana
 Page 1 of 2

Path: Z:\Clients\ENS\Cheniere\104105_SLNG\3RDBERTH\Studies\Geospatial\DataFiles\ArcDocs\USACE\USACE\Fig2_Book_PG1.mxd ewemmerich 2/1/2019
 COPYRIGHT © 2019 BURNS & MCDONNELL ENGINEERING COMPANY, INC. Datum/Coordinate System: NAD 1983 StatePlane Louisiana South FIPS 1702 Feet



Tidal Range

MHHW (+1.23')
MHW (+1.13')
MSL (+0.58')
MLW (+0.04')
NAVD88 (0.00')
MLLW (-0.37')

Path: Z:\Clients\ENS\Cheniere\Em1104105_S LNG\3RDBERTH\Studies\Geospatial\DataFiles\ArcDocs\USACE\USACE Fig2_Book_PG2.mxd ewemmerich 2/1/2019
 COPYRIGHT © 2019 BURNS & McDONNELL ENGINEERING COMPANY, INC. Datum/Coordinate System: NAD 1983 StatePlane Louisiana South FIPS 1702 Feet

- | | | | |
|--|-------------------------|--|--------------------------------|
| | Riprap | | Proposed Design |
| | State Boundary | | Sabine Pass Channel Centerline |
| | Third Berth Impact Area | | MLLW (-0.37') |
| | Existing Shoreline | | Sabine Pass Channel |
| | | | State Boundary |

Dredge depth = -46.37' below MLLW; rounded to -46.00'.

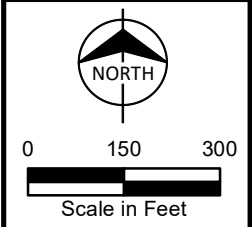
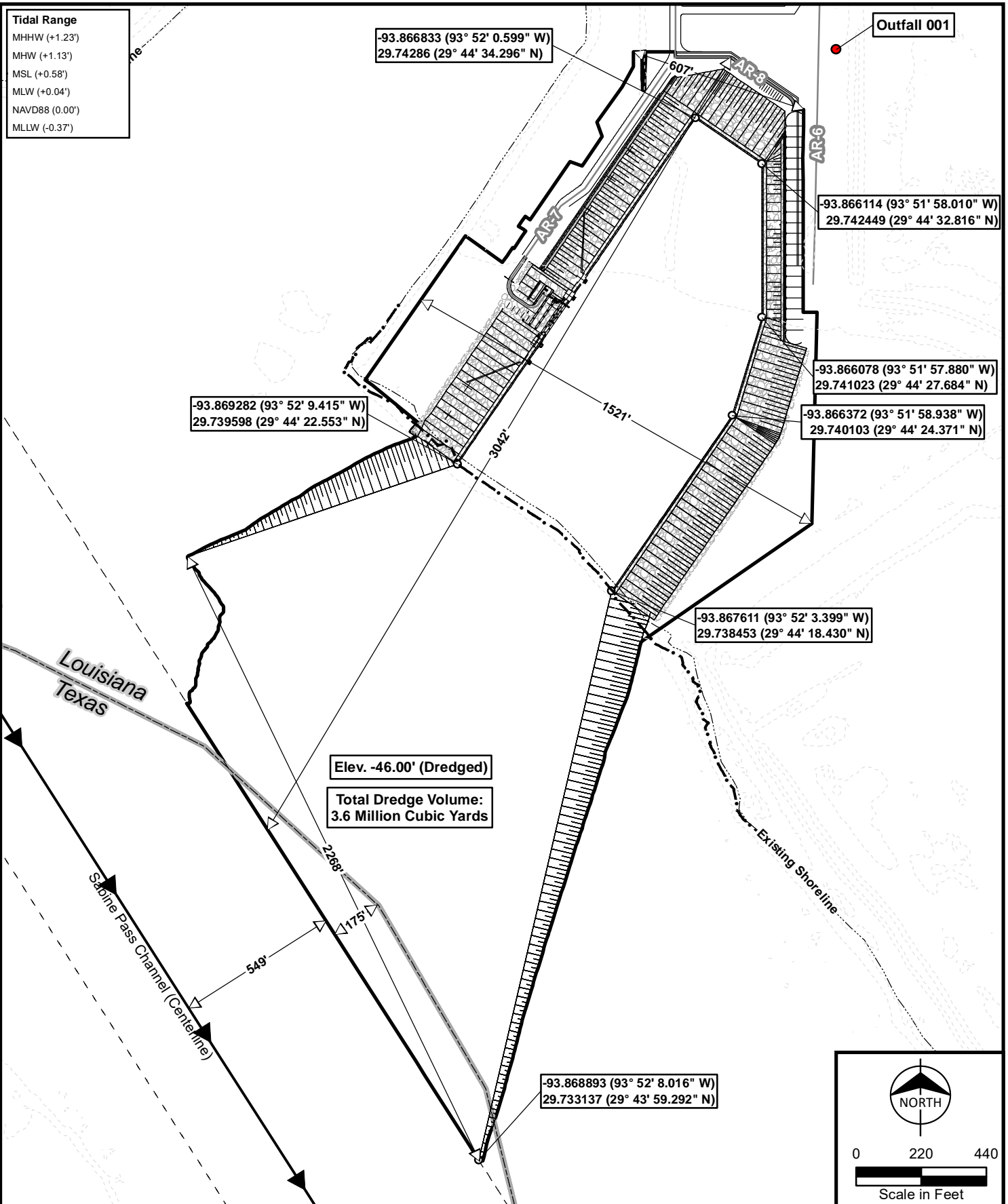


Figure 1-3
 Overview Map
 Sabine Pass LNG, L.P.
 Third Berth Expansion Project
 Cameron Parish, Louisiana
 Page 2 of 2

Path: Z:\Clients\ENS\Cheniere\104105_S LNG\3RDBERTH\Studies\Geospatial\DataFiles\ArcDocs\USACE\USACE_Design_Fig1.mxd ewemmerich 2/1/2019
 COPYRIGHT © 2019 BURNS & McDONNELL ENGINEERING COMPANY, INC. Datum/Coordinate System: NAD 1983 StatePlane Louisiana South FIPS 1702 Feet



- Third Berth Impact Area
- Sabine Pass Channel Centerline
- Riprap
- Sabine Pass Channel
- Shoreline
- Design
- Outfall 001
- MLLW (-0.37')
- Access Road
- State Boundary

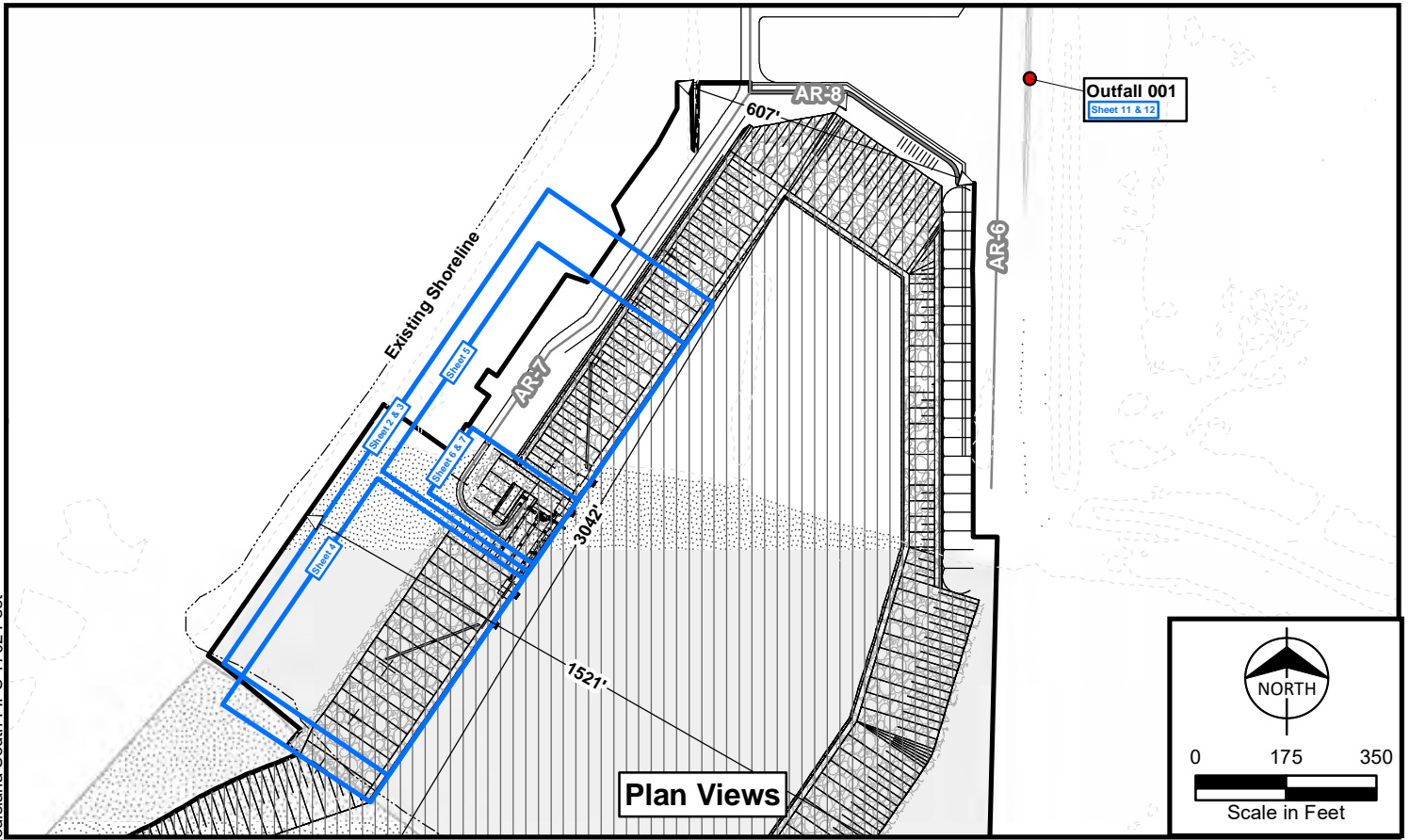


Figure 2-1
 Plan View
 Sabine Pass LNG, L.P.
 Third Berth Expansion Project
 Cameron Parish, Louisiana

Dredge depth = -46.37' below MLLW; rounded to -46.00'

Source: Cheniere, and Burns & McDonnell Engineering Company, Inc.

Issued: 2/1/2019



- Third Berth Impact Area
- Riprap
- Contour
- Shoreline
- Outfall 001
- Dredging Extent
- Access Road
- Design
- State Boundary
- Delineated Wetland
- Delineated River
- Delineated Stream

Tidal Range	
MHHW	(+1.23')
MHW	(+1.13')
MSL	(+0.58')
MLW	(+0.04')
NAVD88	(0.00')
MLLW	(-0.37')

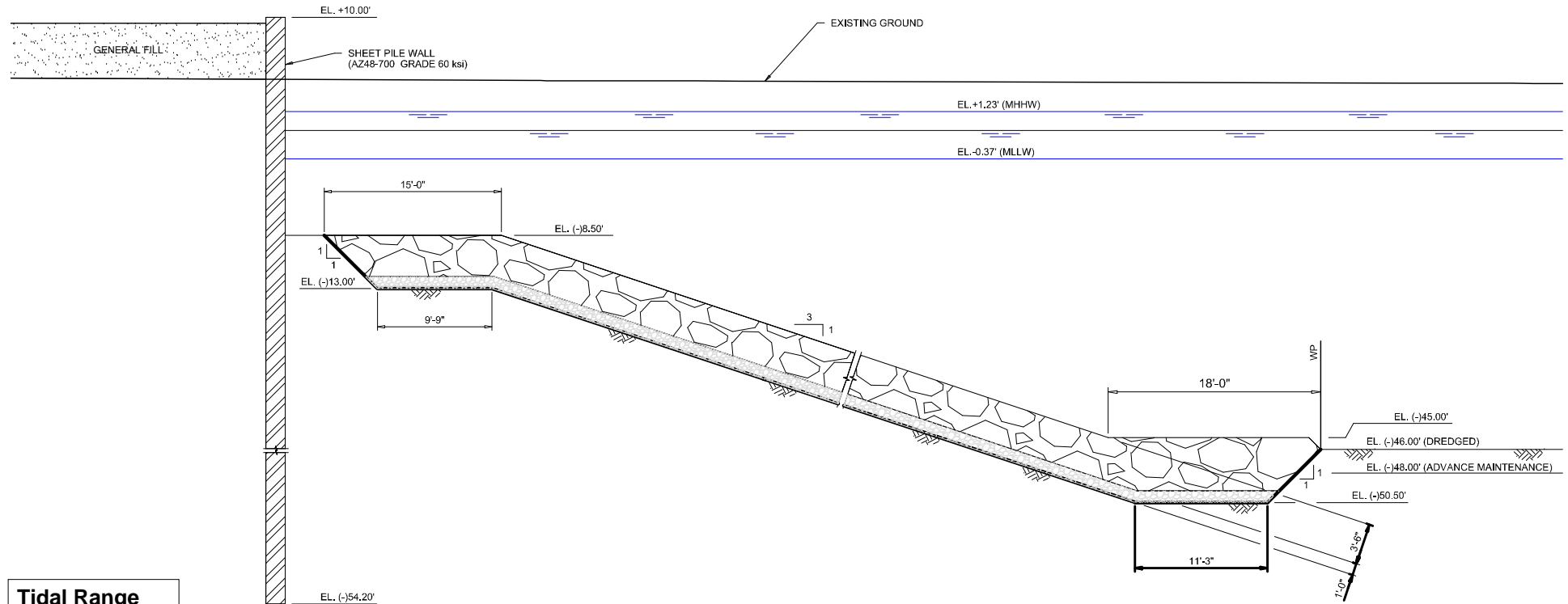
Dredge depth = -46.37' below MLLW; rounded to -46.00'.



Figure 2-2
Plan View Index Map
Sabine Pass LNG, L.P.
Third Berth Expansion Project
Cameron Parish, Louisiana

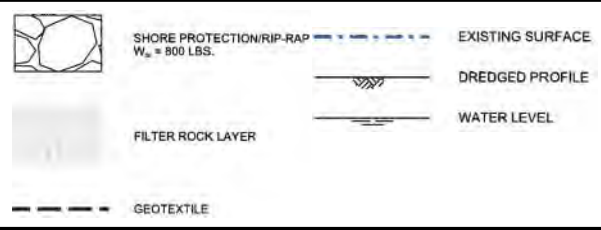
Path: Z:\Clients\ENS\Cheniere\Enr\104105_SLN\G3\ROBERTH\Studies\Geospatial\DataFiles\ArcDocs\USA\CE\USA\CE Design_Fig2.mxd ewemmerich 1/31/2019
 COPYRIGHT © 2019 BURNS & MCDONNELL ENGINEERING COMPANY, INC. Datum: Coordinate System: NAD_1983_StatePlane_Louisiana_South_FIPS_1702_Feet

Path: Z:\Clients\ENS\CheniereEnr\104105_SLNG3RDBERTH\Studies\Geospatial\DataFiles\ArcDocs\JPA\SLNG3RDBERTH_Berth_Slope_2.pdf
 10/19/2018 COPYRIGHT © 2018 BURNS & McDONNELL ENGINEERING COMPANY, INC.



Tidal Range

MHHW (+1.23')
MHW (+1.13')
MSL (+0.58')
MLW (+0.04')
NAVD88 (0.00')
MLLW (-0.37')

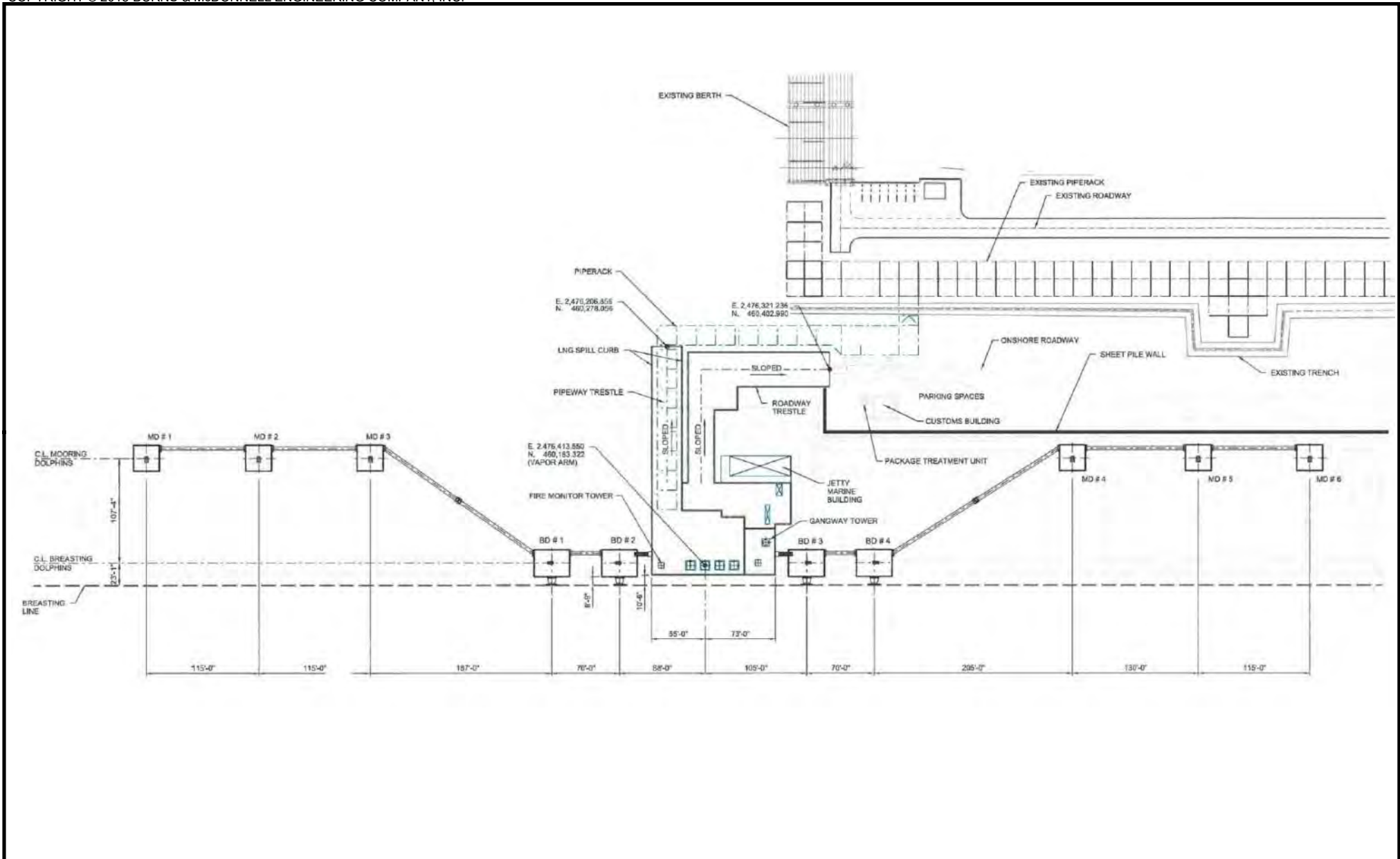


- Notes:
1. Unless otherwise specified, all dimensions are in feet.
 2. All elevations are in feet to NAVD88.
 3. Drawing not to scale.
 4. For plan overview, see Figure 2-2 Plan View Detail Map



Figure 2-2, Sheet 1
 Third Berth Slope Typical
 Sabine Pass LNG, L.P. Third
 Berth Expansion Project
 Cameron Parish, Louisiana

Path: Z:\Clients\ENS\CheniereEnr\104105_SLNG3RDBERTH\Studies\Geospatial\DataFiles\ArcDocs\JPA\SLNG3RDBERTH_Mooring_Arrangement.pdf 10/19/2018
 COPYRIGHT © 2018 BURNS & McDONNELL ENGINEERING COMPANY, INC.



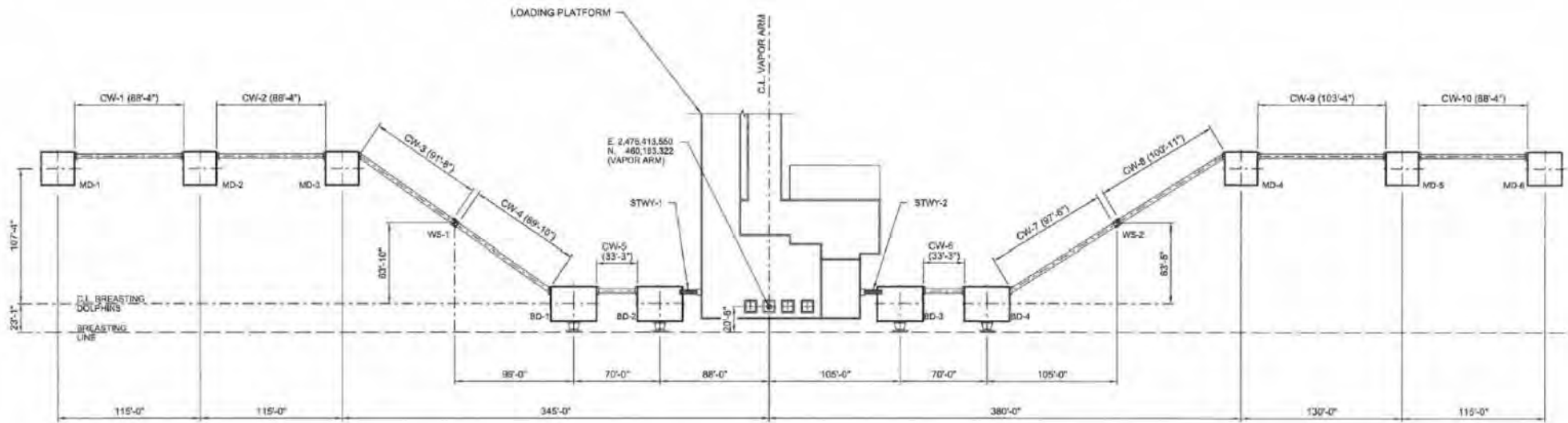
Notes:

1. Unless otherwise specified, all dimensions are in feet.
2. All elevations are in feet to NAVD88.
3. Coordinates are in NAD83 Louisiana State Plane Southern Zone, US Survey Feet.
4. Dolphin centerlines are measured from the centerline of mooring hooks.
5. Drawing not to scale.
6. For location detail, see Figure 2-2 Plan View Index Map



Figure 2-2, Sheet 2
 Mooring Arrangement Plan
 Sabine Pass LNG, L.P.
 Third Berth Expansion Project
 Cameron Parish, Louisiana

Path: Z:\Clients\ENS\CheniereEnr\104105_SLNG3RDBERTH\Studies\Geospatial\DataFiles\ArcDocs\JPA\SLNG3RDBERTH_Dolphin_Catwalk_Plan.pdf 10/19/2018
 COPYRIGHT © 2018 BURNS & McDONNELL ENGINEERING COMPANY, INC.



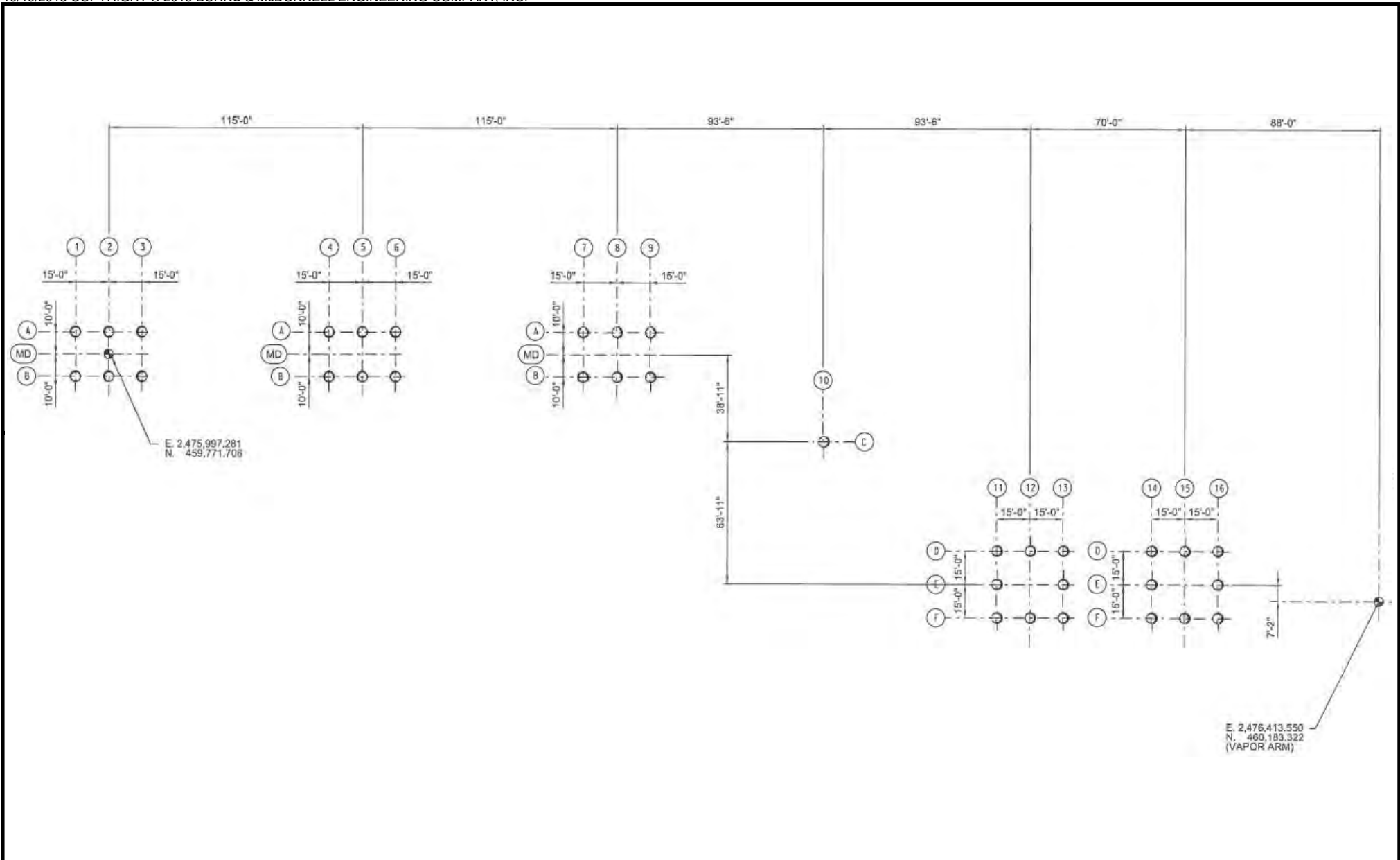
Notes:

1. Unless otherwise specified, all dimensions are in feet.
2. All elevations are in feet to NAVD88.
3. Coordinates are in NAD83 Louisiana State Plane Southern Zone, US Survey Feet.
4. Catwalk dimensions are measured from the centerline of bearings.
5. Dolphin dimensions are measured from the centerline of mooring hooks.
6. Drawing not to scale.
7. For location detail, see Figure 2-2 Plan View Detail Map



Figure 2-2, Sheet 3
 Dolphin and Catwalk Plan
 Sabine Pass LNG, L.P. Third
 Berth Expansion Project
 Cameron Parish, Louisiana

Path: Z:\Clients\ENS\CheniereEnr\104105_SLNG3RDBERTH\Studies\Geospatial\DataFiles\ArcDocs\JPA\SLNG3RDBERTH_Dolphin_Pile_Plan_1.pdf
 10/19/2018 COPYRIGHT © 2018 BURNS & McDONNELL ENGINEERING COMPANY, INC.



- ⊕ WORKING POINT
- Ø 54" PIPE PILE

Notes:
 1. Unless otherwise specified, dimensions are in feet.
 2. All elevations are in feet to NAVD88.
 3. Coordinates are in NAD83 Louisiana State Plane Southern Zone, US Survey Feet.
 4. Drawing not to scale.
 5. For location detail, see Figure 2-2 Plan View Detail Map

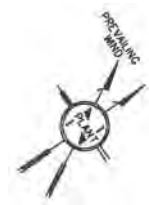
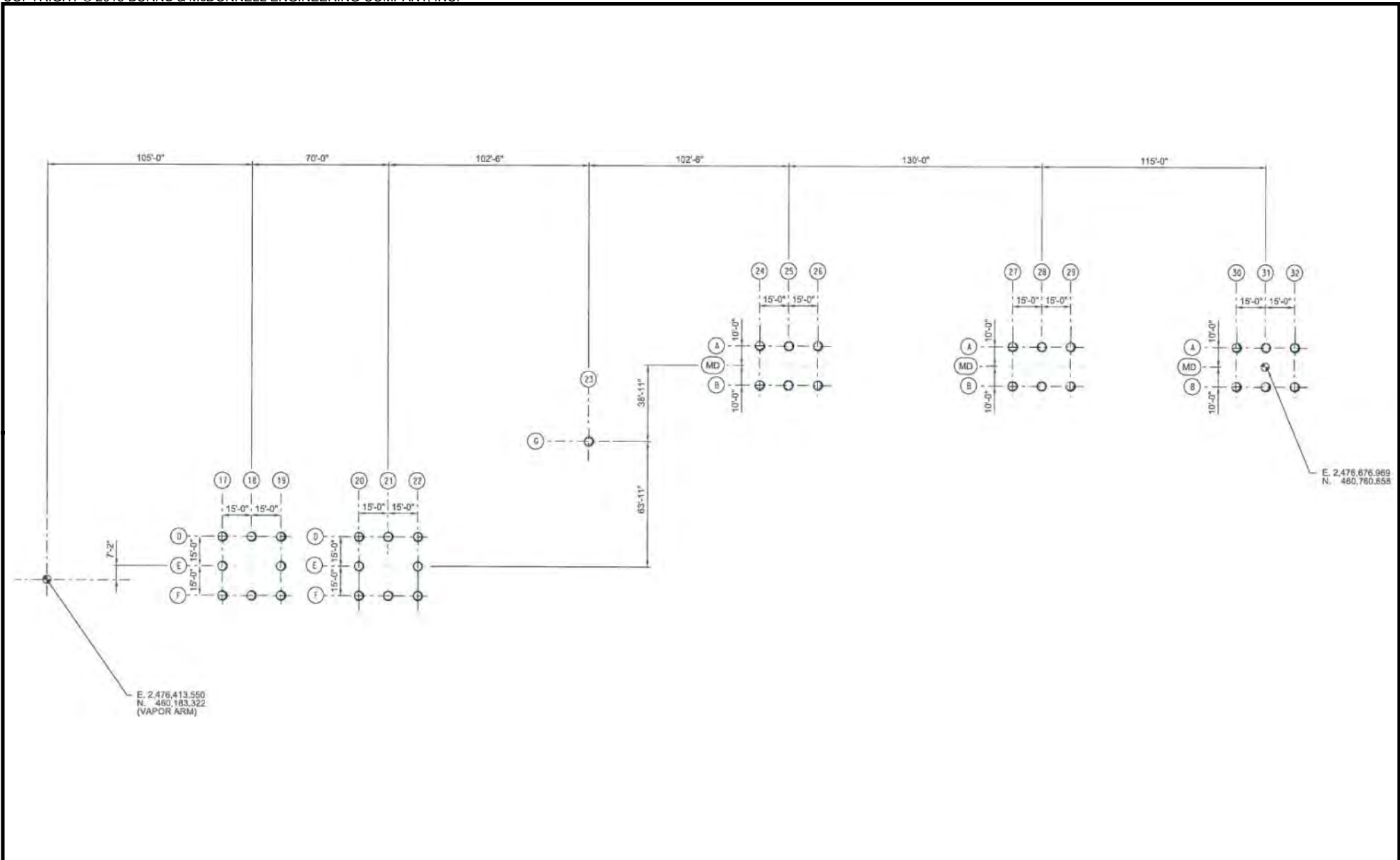


Figure 2-2, Sheet 4
 Dolphin Pile Plan
 Sabine Pass LNG, L.P.
 Third Berth Expansion Project
 Cameron Parish, Louisiana

Path: Z:\Clients\ENS\CheniereEnr\104105_SLNG3RDBERTH\Studies\Geospatial\DataFiles\ArcDocs\JPA\SLNG3RDBERTH_Dolphin_Pile_Plan_2.pdf 10/19/2018
 COPYRIGHT © 2018 BURNS & McDONNELL ENGINEERING COMPANY, INC.



- ⊕ WORKING POINT
- Ø 54" PIPE PILE

- Notes:
1. Unless otherwise specified, dimensions are in feet.
 2. All elevations are in feet to NAVD88.
 3. Coordinates are in NAD83 Louisiana State Plane Southern Zone, US Survey Feet.
 4. Drawing not to scale.
 5. For location detail, see Figure 2-2 Plan View Detail Map

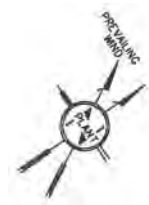
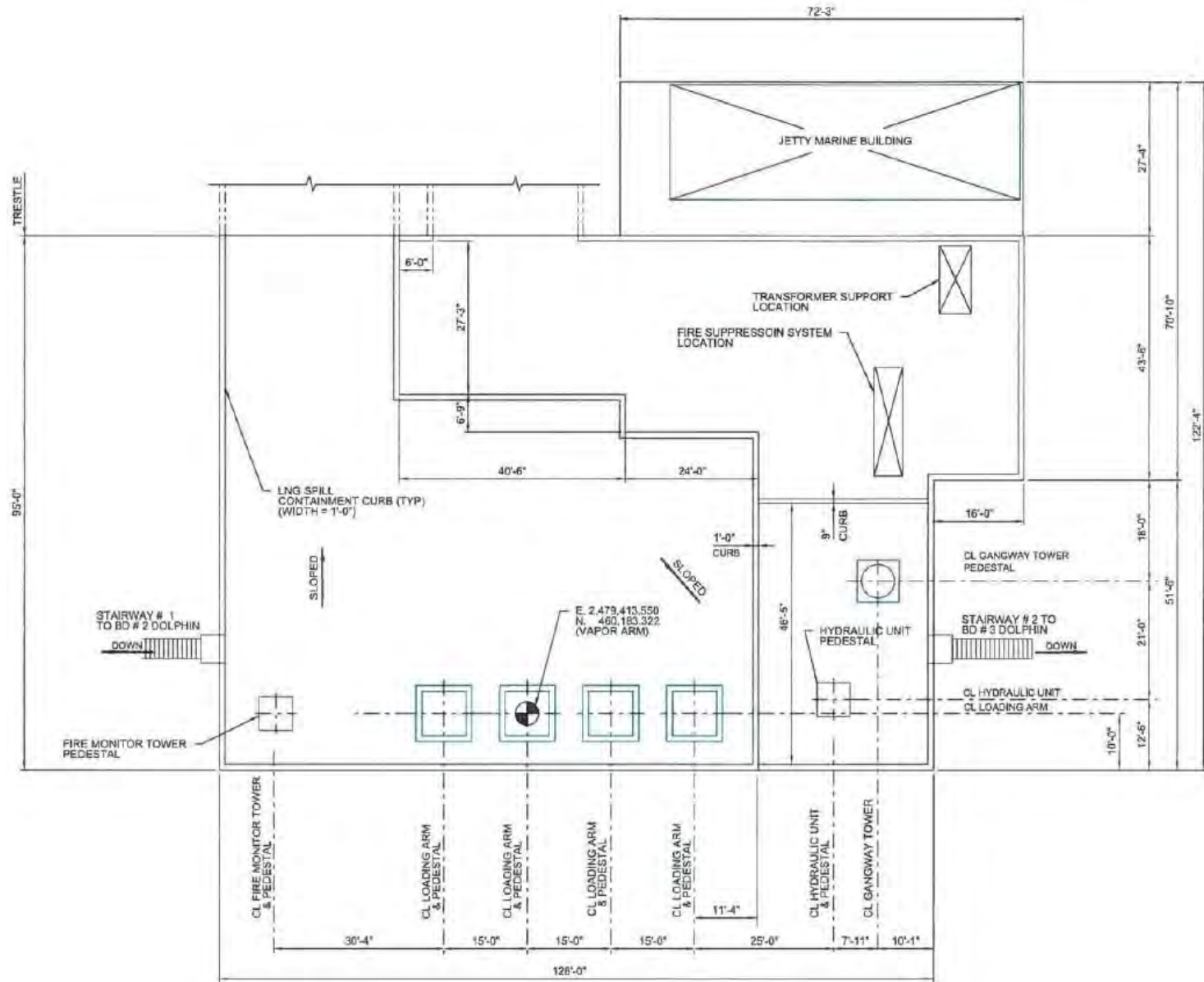


Figure 2-2, Sheet 5
 Dolphin Pile Plan
 Sabine Pass LNG, L.P.
 Third Berth Expansion Project
 Cameron Parish, Louisiana

Path: Z:\Clients\ENS\Cheniere\104105_SLNG3RDBERTH\Studies\Geospatial\DataFiles\ArcDocs\JPA\SLNG3RDBERTH>Loading_Platform_Plan.pdf
 10/19/2018 COPYRIGHT © 2018 BURNS & McDONNELL ENGINEERING COMPANY, INC.

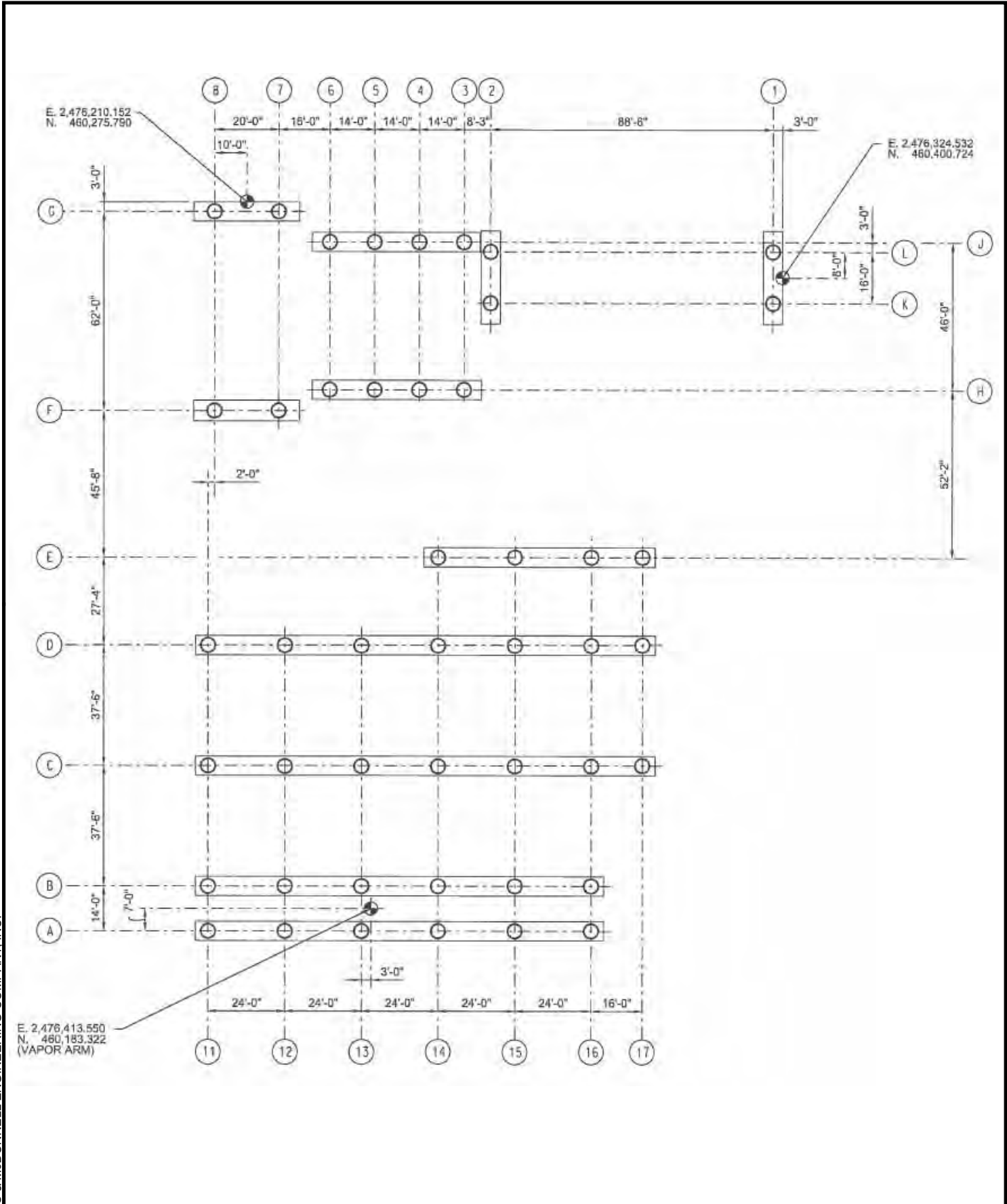


- Notes:
1. Unless otherwise specified, all dimensions are in feet.
 2. All elevations are in feet to NAVD88.
 3. Coordinates are in NAD83 Louisiana State Plane Southern Zone, US Survey Feet.
 4. Drawing not to scale.
 5. For location detail, see Figure 2-2 Plan View Index Map



Figure 2-2, Sheet 6
 Loading Platform Plan
 Sabine Pass LNG, L.P.
 Third Berth Expansion Project
 Cameron Parish, Louisiana

Path: Z:\Clients\ENS\Cheniere\104105_S LNG3\RD\BERTH\Studies\Geospatial\DataFiles\ArcDocs\JPA\SLNG3\RD\BERTH_Pile_Cap_Plan_10/18/2018
COPYRIGHT © 2018 BURNS & McDONNELL ENGINEERING COMPANY, INC.



- WORKING POINT
- 54" PIPE PILE

Notes:
 1. Unless otherwise specified, all dimensions are in feet.
 2. All elevations are in feet to NAVD88.
 3. Coordinates are in NAD83 Louisiana State Plane Southern Zone, US Survey Feet.
 4. For location detail, see Figure 2-2 Plan View Index Map

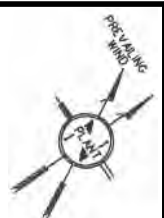
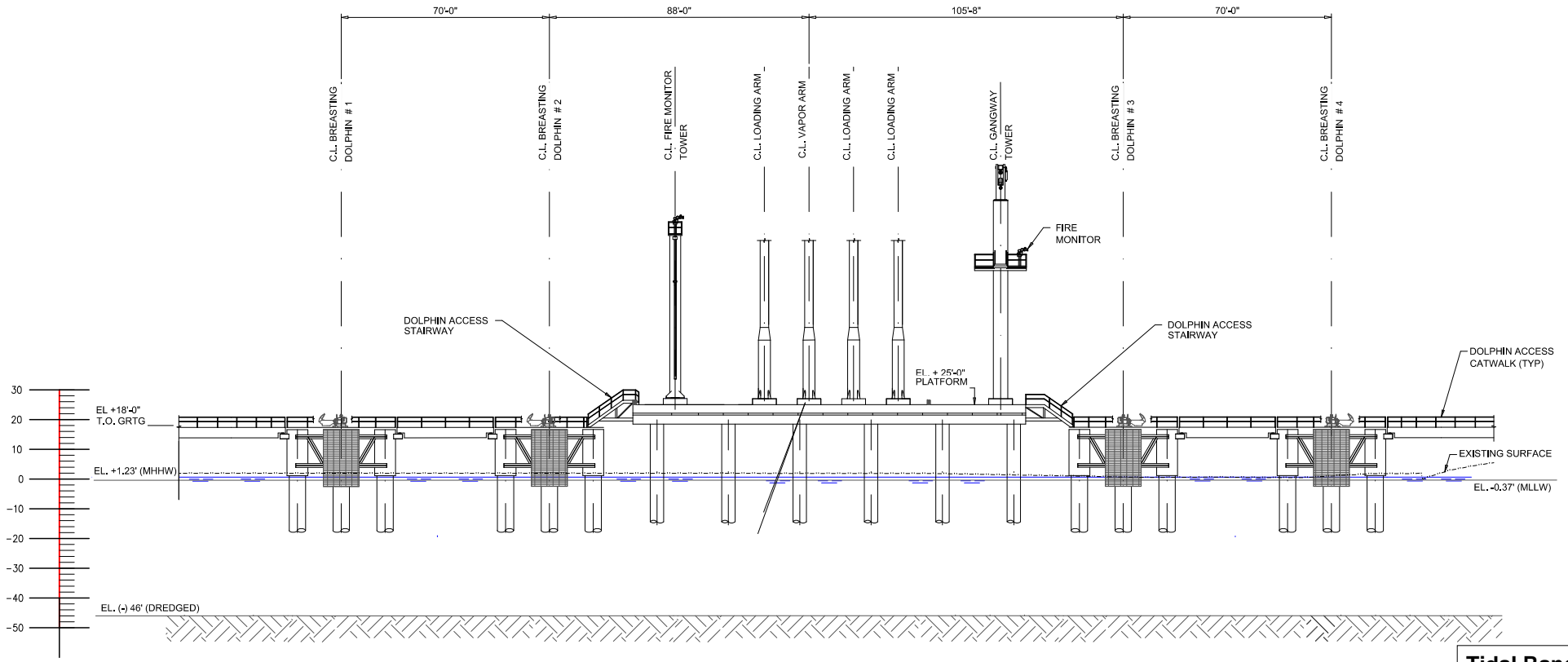


Figure 2-2, Sheet 7
 Loading Platform & Access
 Trestle & Capping Beam Plan
 Sabine Pass LNG, L.P.
 Third Berth Expansion Project
 Cameron Parish, Louisiana

Path: Z:\Clients\ENS\CheniereEnr\104105_SLNG3RDBERTH\Studies\Geospatial\DataFiles\ArcDocs\JPA\SLNG3RDBERTH_Loading_Berth_1.pdf 10/19/2018 COPYRIGHT © 2018 BURNS & McDONNELL ENGINEERING COMPANY, INC.



Tidal Range	
MHHW	(+1.23')
MHW	(+1.13')
MSL	(+0.58')
MLW	(+0.04')
NAVD88	(0.00')
MLLW	(-0.37')

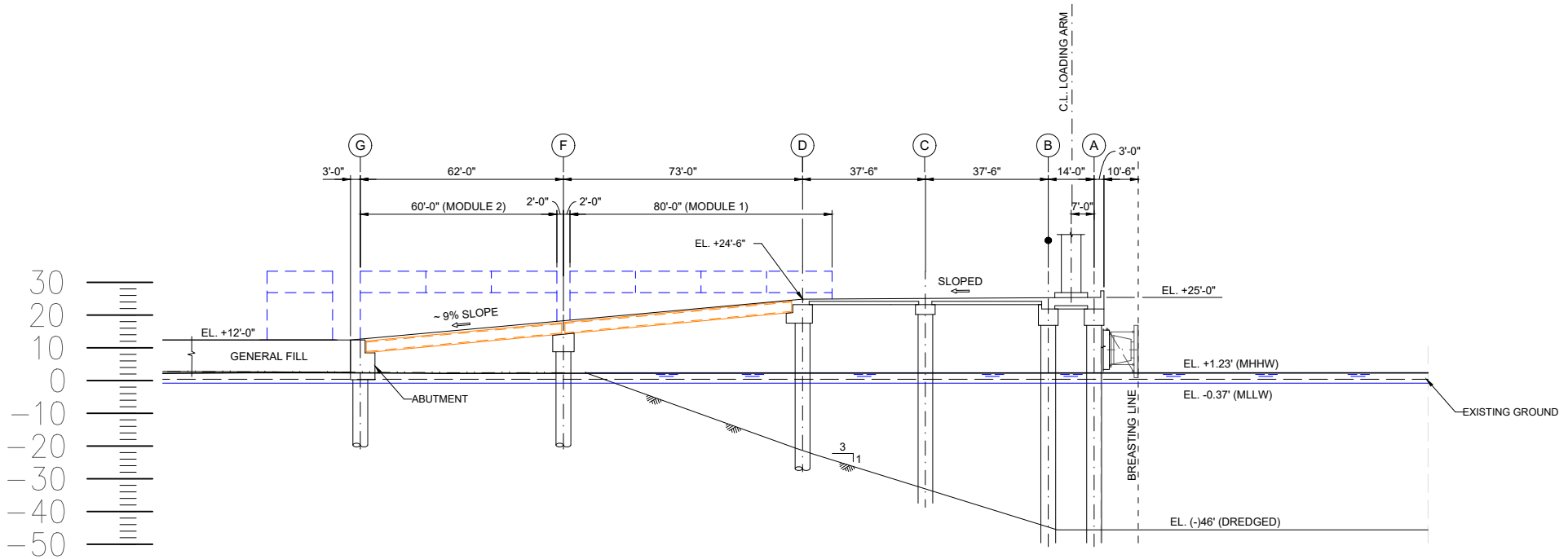
Notes:

1. Unless otherwise specified, all dimensions are in feet.
2. All elevations are in decimal feet to NAVD88
3. Coordinates are in NAD83 Louisiana State Plane Southern Zone, US Survey Feet.
4. Dolphin centerlines as measured from the centerline for the mooring hooks.
5. For location detail, see Figure 2-2 Plan View Index Map



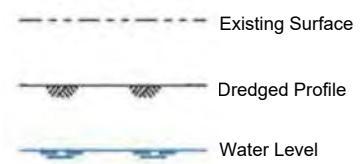
Figure 2-2, Sheet 8
LNG Loading Berth Typical
Sabine Pass LNG, L.P. Third
Berth Expansion Project
Cameron Parish, Louisiana

Path: Z:\Clients\ENS\CheniereEnr\104105_SLNG3RDBERTH\Studies\Geospatial\DataFiles\ArcDocs\JPA\SLNG3RDBERTH>Loading_Berth_2.pdf 10/19/2018
 COPYRIGHT © 2018 BURNS & McDONNELL ENGINEERING COMPANY, INC.



Tidal Range

MHHW (+1.23')
MHW (+1.13')
MSL (+0.58')
MLW (+0.04')
NAVD88 (0.00')
MLLW (-0.37')



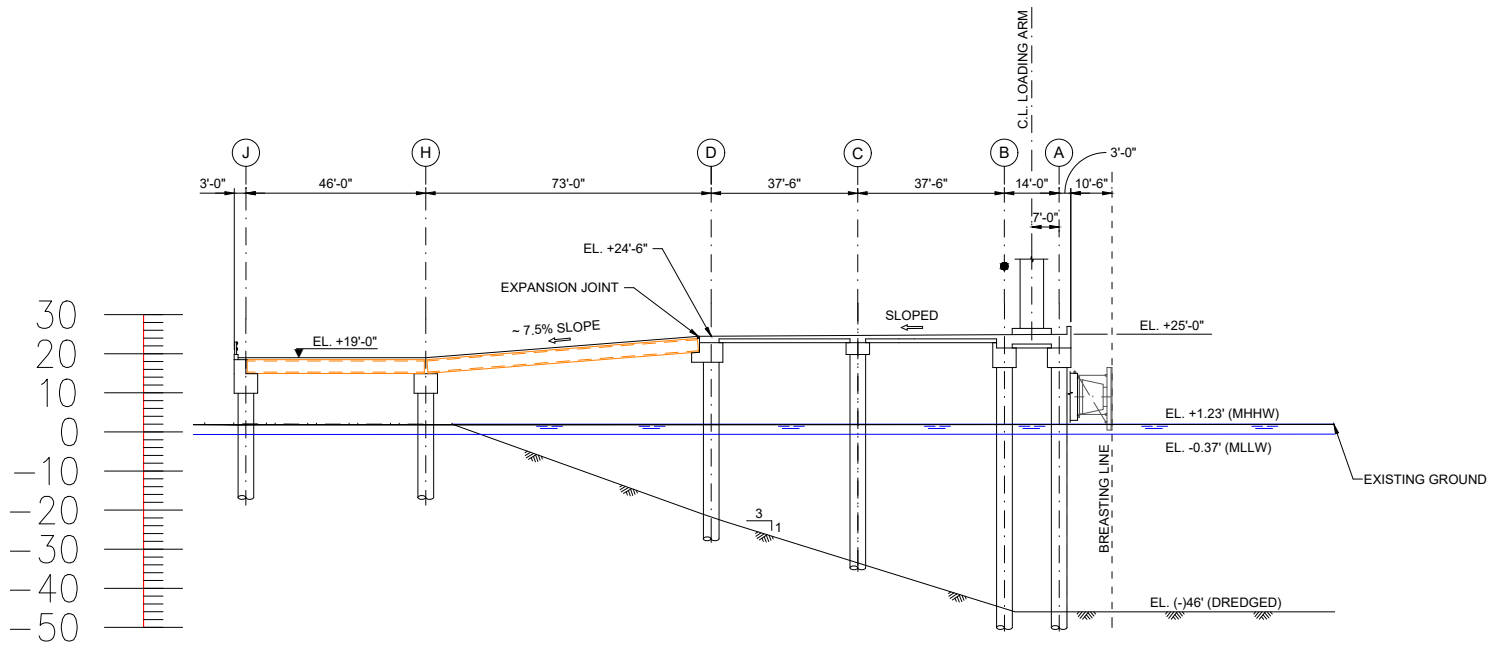
- Notes:
1. Unless otherwise specified, all dimensions are in feet.
 2. All elevations are in feet to NAVD88.
 3. Coordinates are in NAD83 Louisiana State Plane Southern Zone, US Survey Feet.
 4. For location detail, see Figure 2-2 Plan View Index Map



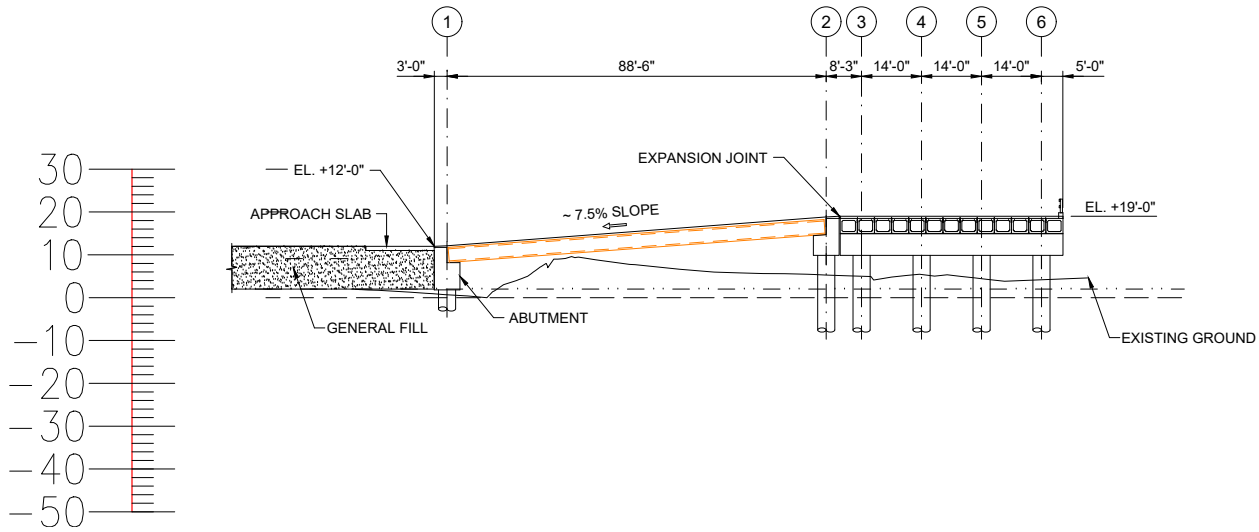
Figure 2-2, Sheet 9
 LNG Loading Berth
 Sabine Pass LNG, L.P. Third
 Berth Expansion Project
 Cameron Parish, Louisiana

Path: Z:\Clients\ENSC\CheniereEnr\104105_SLNG3RDBERTH\Studies\Geospatial\DataFiles\ArcDocs\JPA\SLNG3RDBERTH>Loading_Bert_3.pdf 10/19/2018
 COPYRIGHT © 2018 BURNS & McDONNELL ENGINEERING COMPANY, INC.

A

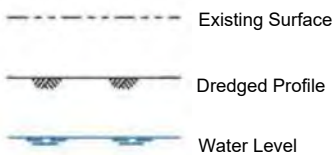


B



Tidal Range

MHHW (+1.23')
MHW (+1.13')
MSL (+0.58')
MLW (+0.04')
NAVD88 (0.00')
MLLW (-0.37')

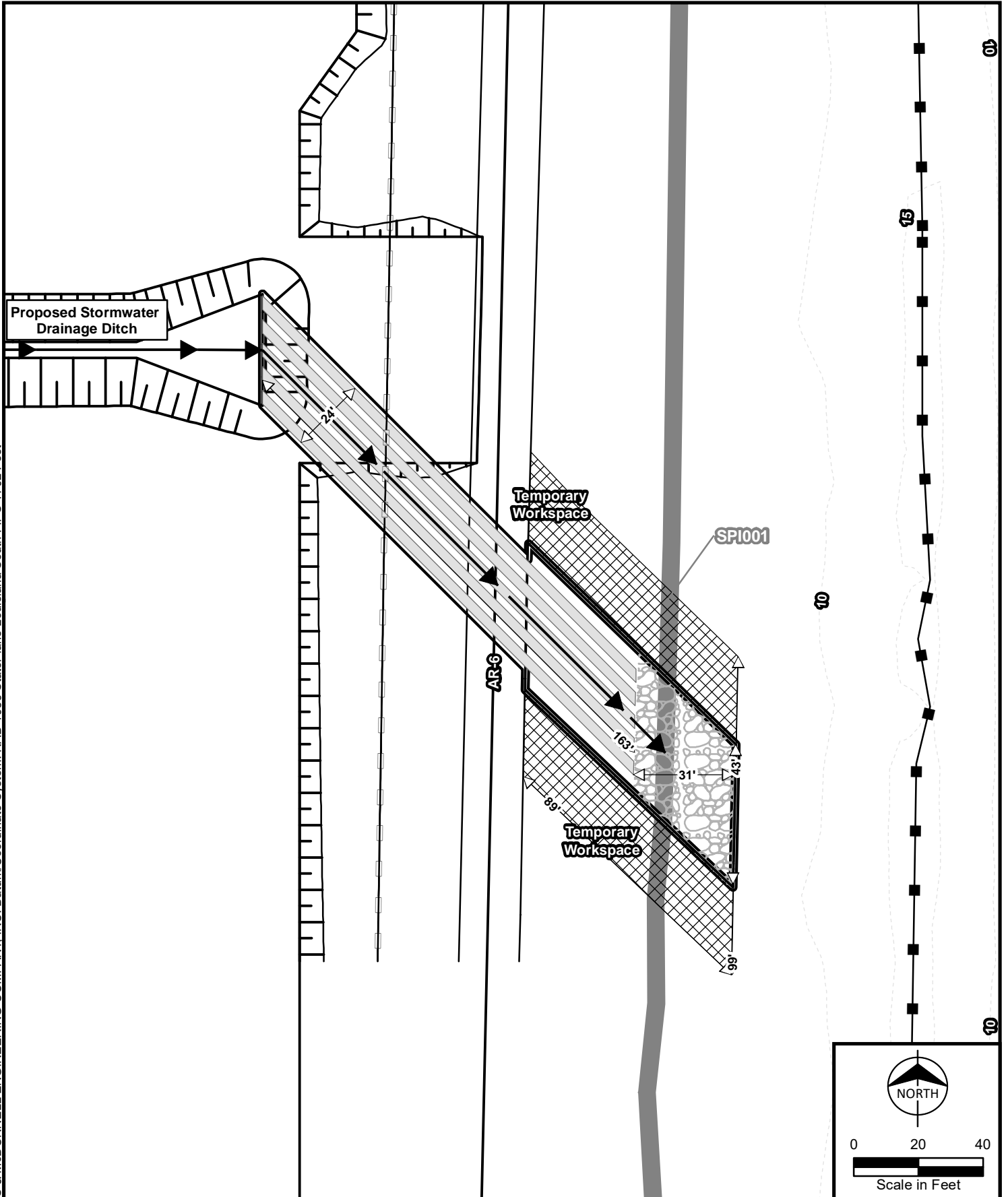


- Notes:
1. Unless otherwise specified, all dimensions are in feet.
 2. All elevations are in feet to NAVD88.
 3. Coordinates are in NAD83 Louisiana State Plane Southern Zone, US Survey Feet.
 4. For location detail, see Figure 2-2 Plan View Index Map



Figure 2-2, Sheet 10
 LNG Loading Berth
 Sabine Pass LNG, L.P. Third
 Berth Expansion Project
 Cameron Parish, Louisiana

Path: Z:\Clients\ENS\Cheniere\Enr\104105_SLN\G3\RBERTH\Studies\Geospatial\DataFiles\ArcDocs\USA\USA\USA\Design_Outfall.mxd lacrain_12/21/2018
 COPYRIGHT © 2018 BURNS & McDONNELL ENGINEERING COMPANY, INC. Datum/Coordinate System: NAD_1983_StatePlane_Louisiana_South_FIPS_1702_Feet

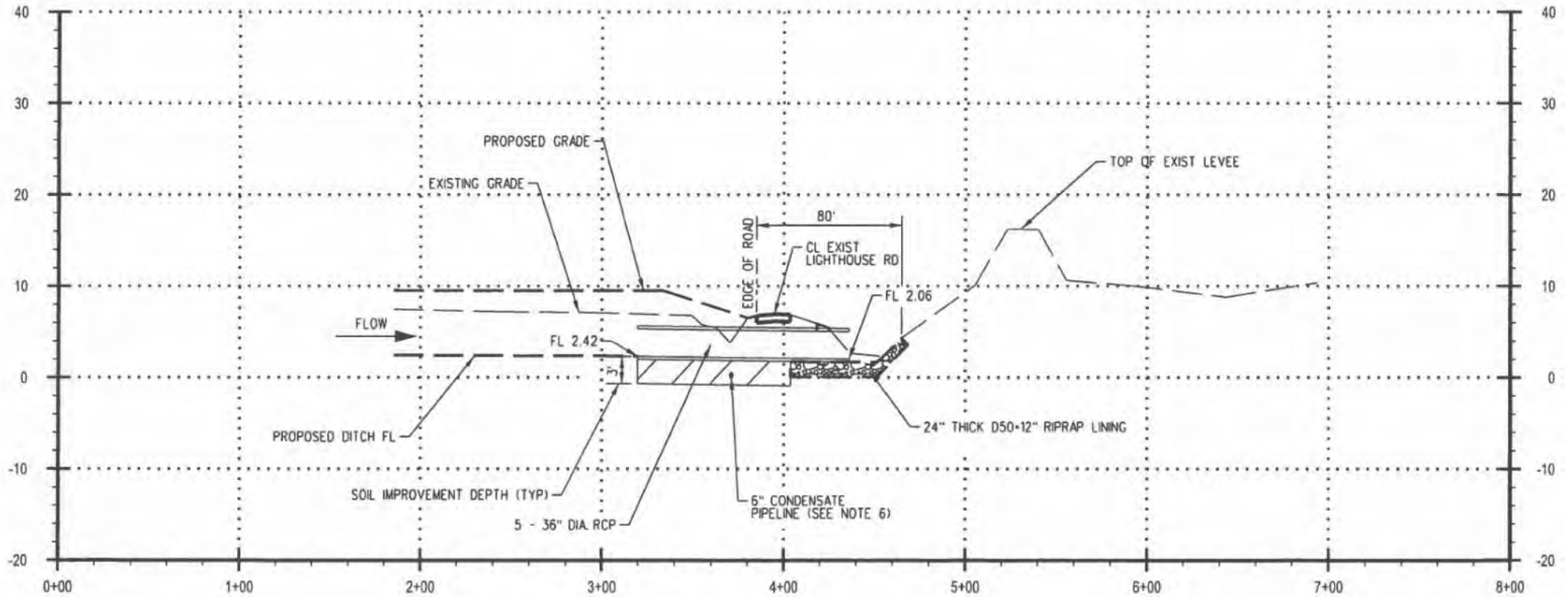


- | | |
|---------------------------------|----------------|
| Existing Access Road | Contour |
| Outfall 001 Permanent Workspace | Riprap |
| Outfall 001 Temporary Workspace | Existing Levee |
| Flow | Fence Line |
| Intermittent Stream (R4) | Design |
| 5 - 36" RCP Culverts | |



Figure 2-2, Sheet 11
 Outfall 001 Plan View
 Sabine Pass LNG, L.P.
 Third Berth Expansion Project
 Cameron Parish, Louisiana

Path: Z:\Clients\ENS\ChenierraEnr\104105_SLNG3RDBERTH\Studies\Geospatial\DataFiles\ArcDocs\JPA\SLNG3RDBERTH_Outfall_001_Section.pdf 10/19/2018
 COPYRIGHT © 2018 BURNS & McDONNELL ENGINEERING COMPANY, INC.



	DIRECTION OF SURFACE SLOPE
	HIGH POINT
	LIMIT OF WORK
	D50 = 12" RIPRAP
	EXISTING UNDERGROUND PIPELINE
	EXISTING FENCE

- Notes:
1. Unless otherwise specified, all dimensions are in feet.
 2. All elevations are in feet to NAVD88.
 3. Coordinates are in NAD83 Louisiana State Plane Southern Zone, US Survey Feet.
 4. Drawing not to scale.
 5. For location detail, see Figure 2-2 Plan View Index Map



Figure 2-2, Sheet 12
 Outfall 001
 Sabine Pass LNG, L.P. Third
 Berth Expansion Project
 Cameron Parish, Louisiana